



Industrial Concrete Services

CONCRETE FINISHES

A photograph of a large, brightly lit industrial warehouse. The floor is a smooth, light gray concrete with a high-gloss finish that reflects the overhead lights. In the foreground, a thick yellow line is painted on the floor, forming a large 'V' shape. In the background, a worker in a high-visibility vest is visible near some equipment. The walls are made of light-colored corrugated metal.

**BEYOND
EXPECTATIONS**
CONCRETE FINISHING

Concrete Repairs & Finishing



WHAT WE DO:

- **SLAB STABILIZATION**
- **NOSE POINTING**
- **CONTROL & CONSTRUCTION JOINTS**
- **MOISTURE MITIGATION AND TESTING METHODS**
- **FLOOR PREP: CRACK CHASING, SHOT BLASTING, DIAMOND GRINDING, & BUFFING**
- **DRY & WET POLISHED CONCRETE**
- **LEVELFLOR & POLISHED OVERLAYS**
- **SEALED CONCRETE**
- **RESINOUS COATINGS**

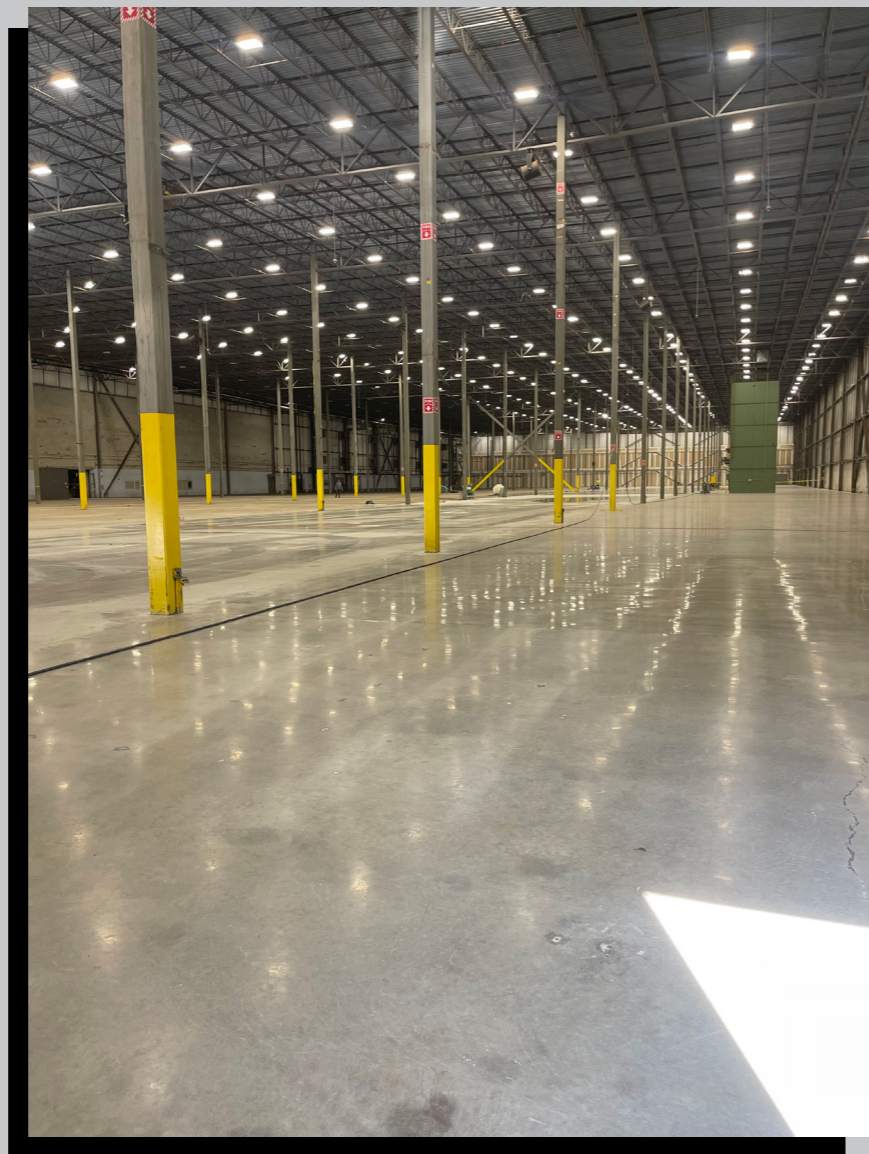
EXCLUSIVE INSPIRATION

- **Established in 1993, 30 Years of Experience**
 - **Installs floor systems throughout the North East**
 - **9 Crews, 50 Installers in the field**
 - **3 Dedicated sales consultants**
 - **3-4 Milion Sq. Ft. of installed floors annually**
 - **Concrete remediation & repairs**
 - **Concrete Finishes**
-

Built for Big Jobs

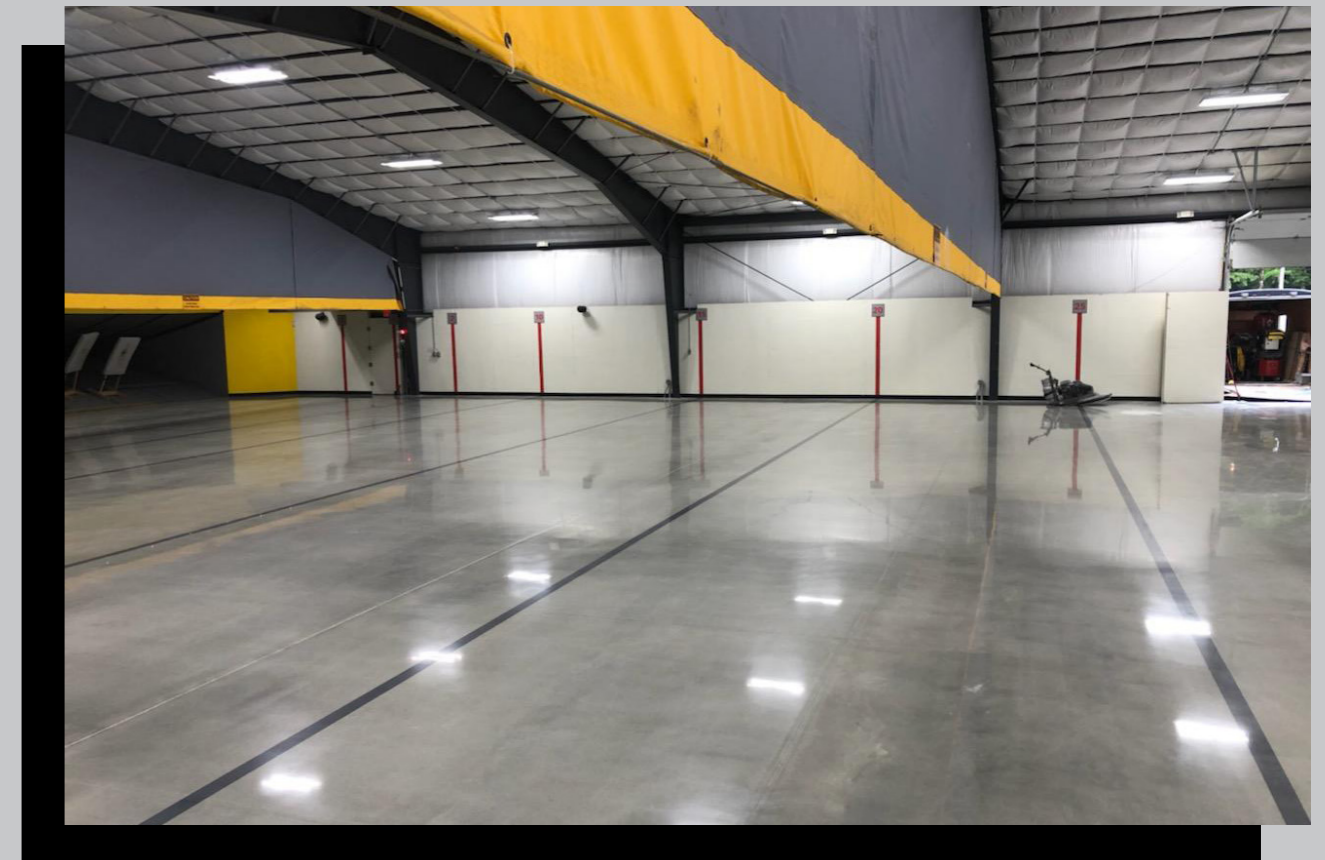
ICS has been in the floor coating and floor polishing business since 1993 concentrating on servicing Industrial and Commercial clients. We have grown to work for over 2,000 customers from every type of business.

We focus primarily on mid to large size projects that typically range from 5,000 sq.ft. to over 1,000,000 sq.ft. Our customers include general contractors, public companies, as well as, private enterprise.



Innovative

We expect to continue to grow and improve our abilities in step with our constantly enlarging client base. The key to ICS business has been it's ability to deliver excellent service and products to our customers on time, every time. Over half of our business comes from repeat clients.



Resinous Coatings

Concrete floor coatings come in a wide range of options. Each product is typically aimed at a specific use or need that is being targeted by coating manufacturers.

Concrete coatings are made from materials that can help ensure your floor coating lasts for many years, protecting the flooring from many types of damage and wear that can occur over time. Concrete coatings are made out of epoxies, urethanes, acrylics and many other less common types like MMA's or polyaspartics.

HIGH TRAFFIC COATING



They also come in a variety of different types of materials like epoxy trowel down, urethane trowel down, thin mil, decorative quartz and shop floor. Their performance characteristics can also be specific like chemical resistant, static dissipative or moisture control. They can be used as resurfacers, repair materials, coatings, and simple dust proofers. Their surface can be smooth and high shine or textured and matte finish.

- Chemical Resistant

- Static Dissipative

- Moisture Control

- Resurfacer

- Dust - Proof



Epoxy coatings are probably one of the most versatile products in the industrial flooring industry. Epoxy comes in a couple different versions, usually water-based or 100% solids. The water-based versions are great for low traffic areas or where longer working time for the material is important.



OTHER TYPES OF FLOOR COATINGS

Urethane

Features:

- Urethane coatings are known for their durability and resistance to abrasion, chemicals, and UV rays.
- They can be applied in various thicknesses, providing flexibility in terms of application and performance.
- Available in both water-based and solvent-based formulations.

Benefits:

- Excellent protective barrier against heavy foot traffic and harsh chemicals.
- Resistant to yellowing or discoloration from UV exposure.
- Long-lasting and ideal for high-traffic areas.

Acrylic

Features:

- Quick-drying and easy to apply.
- Available in both water-based and solvent-based formulations.
- Provides a glossy finish and enhances the aesthetic appeal of the floor.

Benefits:

- Cost-effective solution for industrial and commercial spaces.
- Enhances the color and appearance of the concrete.
- Suitable for areas with light to moderate foot traffic.

MMA (Methyl Methacrylate)

Features:

- Fast-curing and can be applied in low temperatures.
- High chemical resistance.
- Suitable for both indoor and outdoor applications.

Benefits:

- Rapid curing allows for quick return to service, minimizing downtime.
- Excellent adhesion to various substrates.
- Ideal for environments that require a quick turnaround.

Polyaspartic

Features:

- Fast-curing, similar to MMA coatings.
- High abrasion and chemical resistance.
- UV stable, preventing yellowing or deterioration in sunlight.

Benefits:

- Quick curing time enables rapid installation, reducing downtime.
- Excellent durability, making it suitable for high-traffic areas.
- UV stability ensures long-lasting aesthetic appeal.



Broadcast floors can be constructed for both decorative and industrial purposes. These systems include industrial or decorative sand or paint chip flakes broadcasted into an epoxy coating system for a textured, more slip resistant surface. Broadcast floor systems can be used in a variety of applications including residential garages, industrial plants, car dealership floors, schools, hospitals, or other areas where a decorative or industrial broadcast floor system is required.

A broadcast floor system consisting of an epoxy primer, followed by a high-build epoxy broadcast with silica aggregate. The system is then coated with a high-build epoxy, and top coated with an aliphatic urethane enhanced with GlossGrip Safety, Gloss and Wear Additive. This low-odor broadcast system can be pigmented in a variety of colors, and features excellent impact and abrasion resistance. Suited for use in general shop areas where aesthetics and cleanability are a requirement.



BENEFITS:

- Slip Resistant
- Chemical Resistant
- Easy to clean & maintain
- Abrasion Resistant
- Aliphatic / Light Stable

Broadcast Shop Floor

CEMENTITIOUS URETHANE MORTAR

- CAN BE APPLIED TO 7-14 DAY OLD CONCRETE
- SEAMLESS HYGENIC FINISH
- 1/8" - 1/2" THICKNESS
- 99% MOISTURE TOLERANT
- THERMAL SHOCK (200°F)
- COMPRESSIVE STRENGTH OF 6,000 - 7,220 PSI
- SLIP & CHEMICAL RESISTANT
- EASY TO CLEAN & MAINTAIN



Moisture Mitigation

RECOMMENDED FOR ANY RH OVER 85% BY THE MANUFACTURER

Epoxy Mitigation Systems

- PIP Protect 1300 MVR at 16mls (Clear)
- RioCoat EVS at 23mls (Clear)

Cementitious Urethane Mortar

- Application Thickness 1/8" - 5/16"
- Allows for any system to be placed on top
- Better Bonding
- More insurance





METALLIC COATINGS



Metallic epoxy is a special multi-layered epoxy floor coating system that incorporates the use of a metallic additives that are mixed into a clear epoxy coating to create exotic effects. This metallic powder continues to move through the epoxy as it cures creating the lava flow or marble pearlescent design. Because of this constant movement of the metallic pigment, even floors that use the same colors will never look the exactly the same, making each floor truly unique.

For metallic epoxy flooring, the quality of the final finish is largely the result of the installer's artistic ability and their level of experience. In addition, the lighting within the space itself plays a huge roll into the look and visible color spectrum manifested in the coating itself.

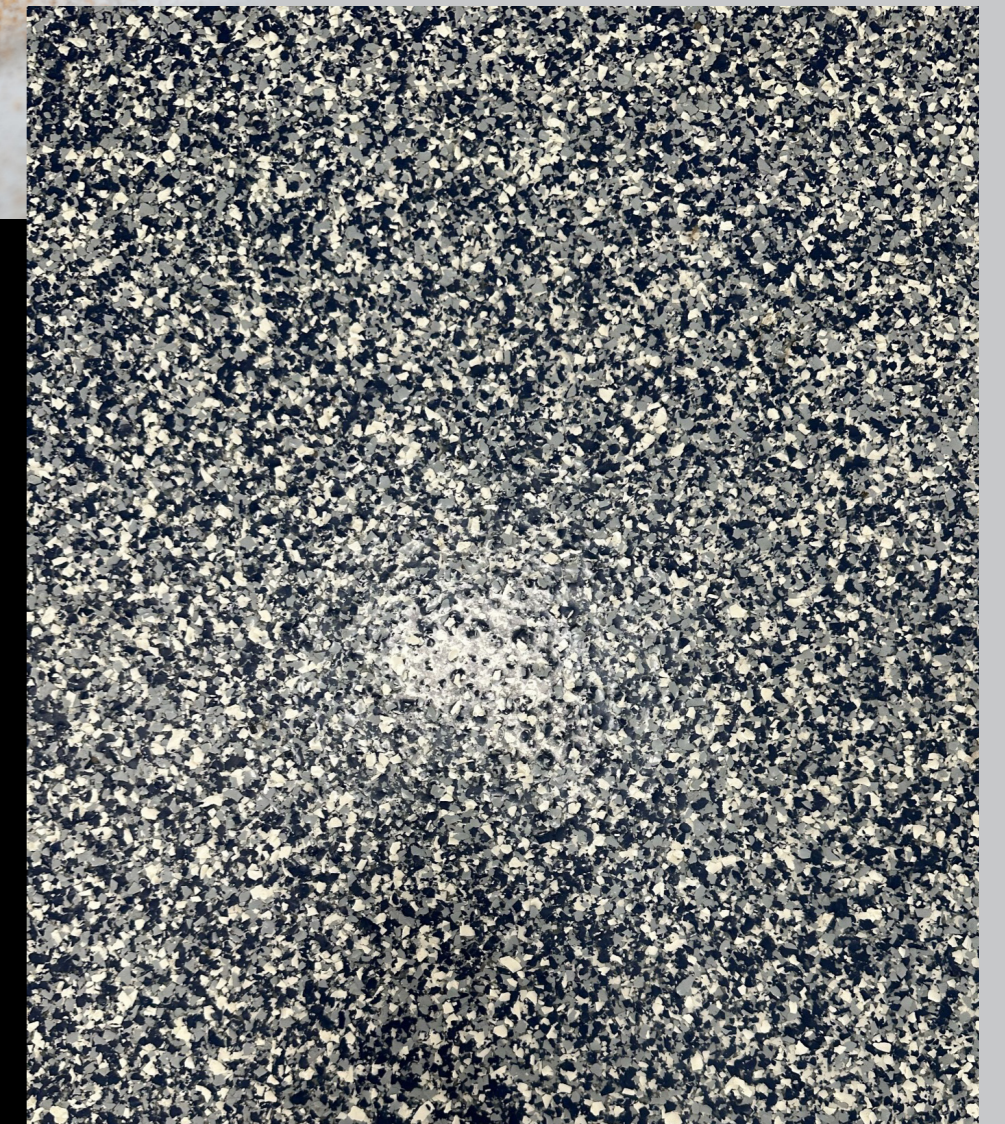
Metallic floor coating systems typically incorporate a black primer to help provide as much contrast as possible within the metallic coat itself. Following the primer, metallic pigments are suspended and given ample opportunity to wet out in a clear binder resin. For this step, we typically specify our LevelGuard™ EP cycloaliphatic epoxy. This is a highly refined water-clear epoxy that will provide for superior flow and metallic effect.

Once applied, the metallic epoxy may be modified either mechanically or chemically to create unique decorative effects. Additional colors may also be incorporated to help accent the floor. Once cured, the metallic epoxy coat is sanded and top-coated with one of our performance urethane topcoats. Available in a gloss or satin finish, urethane topcoats provide for a highly durable wear surface and improved traction.



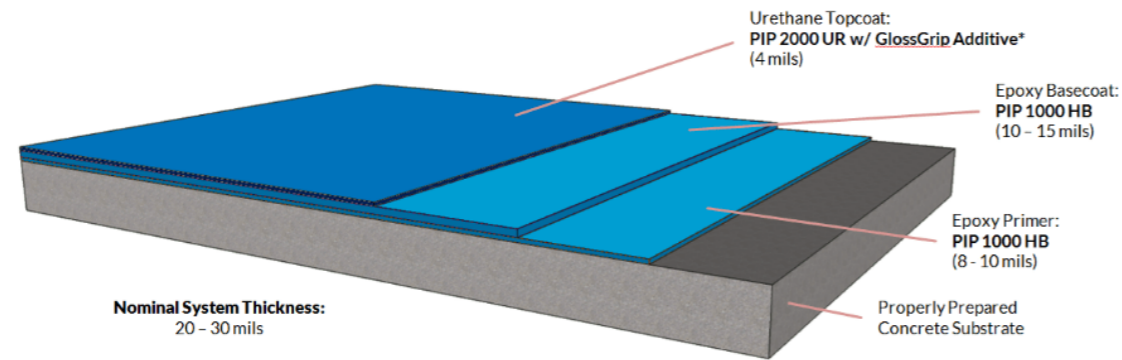
DECORATIVE QUARTZ FLOORING

DECORATIVE FLAKE FLOORING



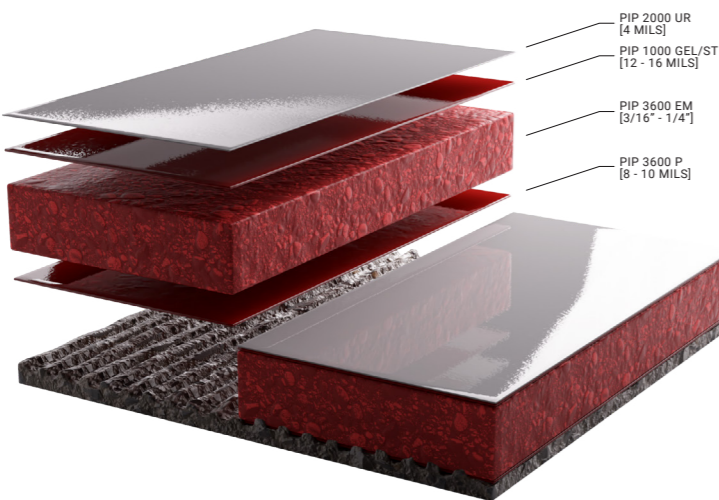
Our Systems

Our work consists of High Performance Coatings, Mortar Flooring, Slurry Flooring, and Broadcast Flooring Systems



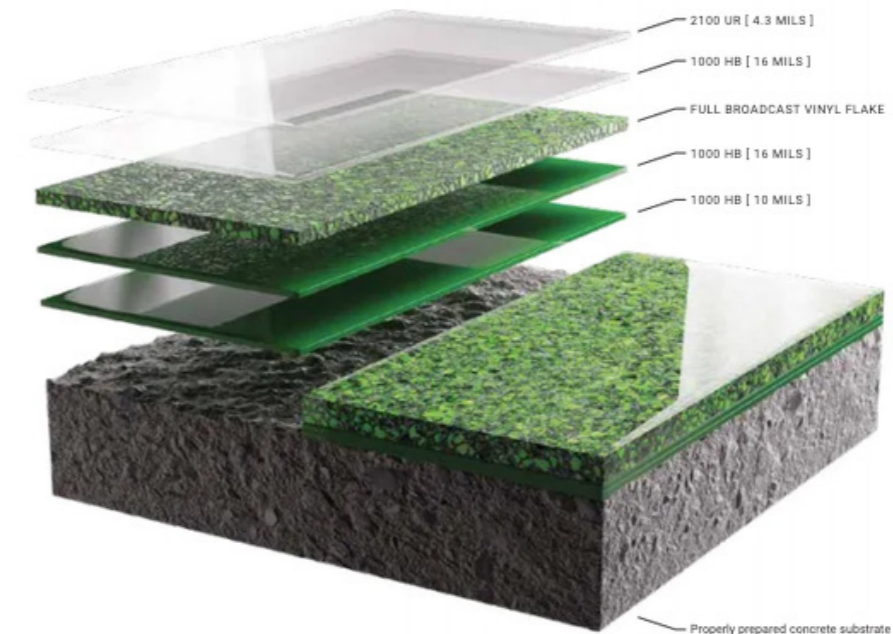
* Alternate system textures available

This system consists of an epoxy primer, followed by a high-build epoxy basecoat. The system then receives a topcoat of aliphatic urethane enhanced with GlossGrip Safety, Gloss and Wear Additive. This low-odor coating system can be pigmented in a variety of colors, and features excellent impact and abrasion resistance. Suited for use in general traffic areas where aesthetics and cleanability are a requirement.



Floor coating systems typically consist of a primer and subsequent topcoat(s). These systems are applied at a range of 15 to 40 mils total system thickness. Depending on use requirements, there are different polymer coating technologies available. From fast-cure epoxies and polyaspartics, to chemical-resistant novalacs and urethanes, to flexible and thermal shock-resistant coatings, we can recommend the correct system to meet your unique requirements.

Coating systems provide adequate coverage to hide slight imperfections in the concrete slab, creating a long-wearing, easy to clean, smooth surface. High-build coatings systems are an excellent choice for general manufacturing areas and warehouses, as well as institutional, commercial or retail areas subject to normal foot, forklift and equipment traffic. Coating systems offer color stability, light-reflectivity and overall pleasing aesthetics. These systems are easy to apply and are relatively maintenance-free. A good cleaning with a mild, neutral-PH cleaner is usually all it takes to get your coating system looking like new again.



Nominal System Thickness: 1/16\" - 1/8\"

Design - Build

POLISHED CONCRETE

Dependable Concrete Floor Polishing Contractors

Concrete polishing is a process that can give you the look and shine and performance that best suits your wants and budget. ICS has done hundreds of jobs where we polish to a higher level in higher profile areas and a lower level in areas like the warehouse. We have developed our own specialized equipment to aid in the speed and quality of the installations of our polished concrete floors. We have extensive knowledge of the right diamonds, densifiers, power sources and vacuums to ensure your project comes out professionally. Our company has been on the cutting edge of polishing since its inception and we can help you make the right choices for your floor.



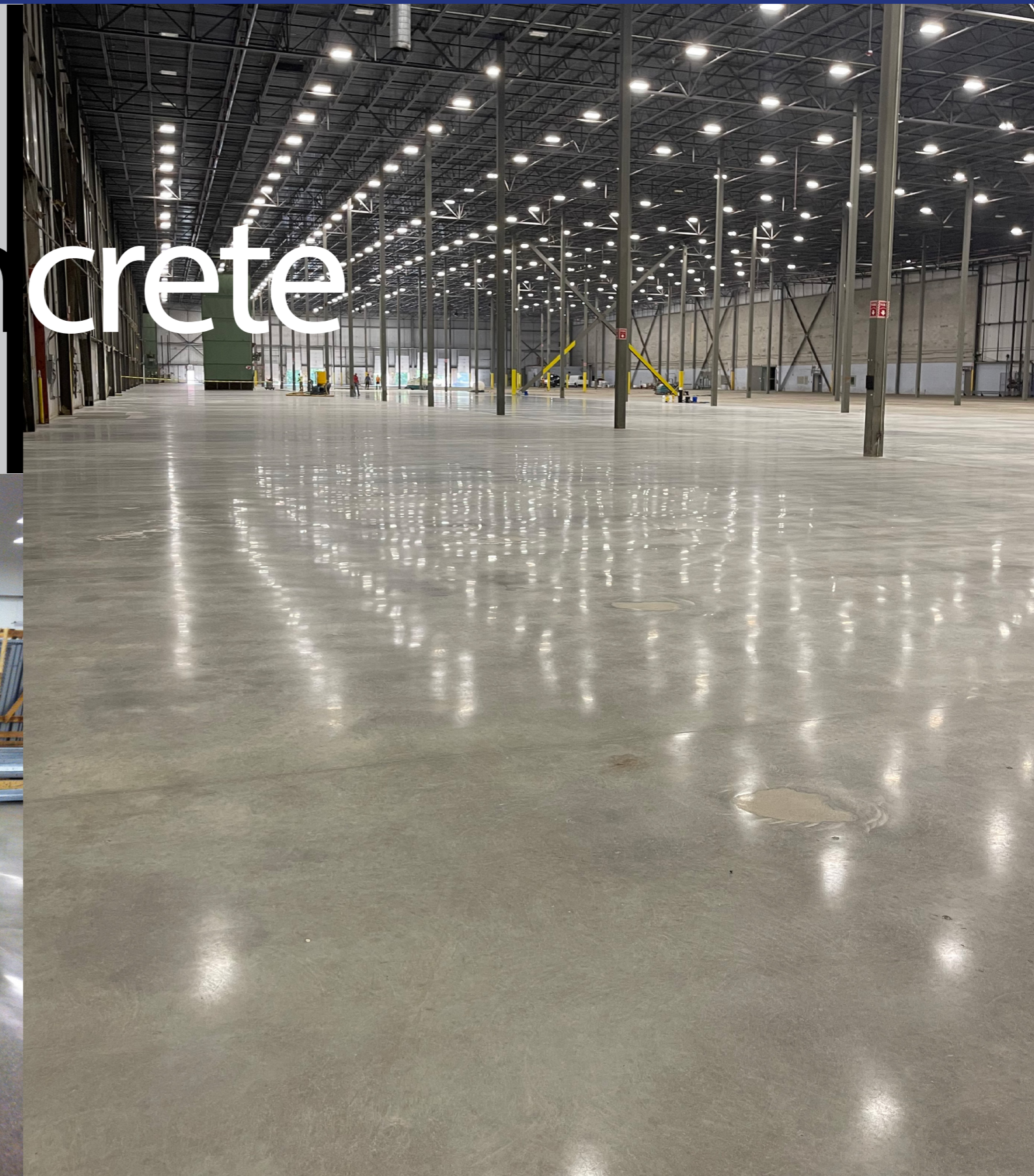
ICS has done over 20 million sq.ft. of polished concrete for hundreds of customers during the last 8 plus years. Before beginning the concrete polishing process, it is important to determine if your floor is suitable for polishing in the first place. Many jobs are specified for polish even before anyone has seen the actual floor.

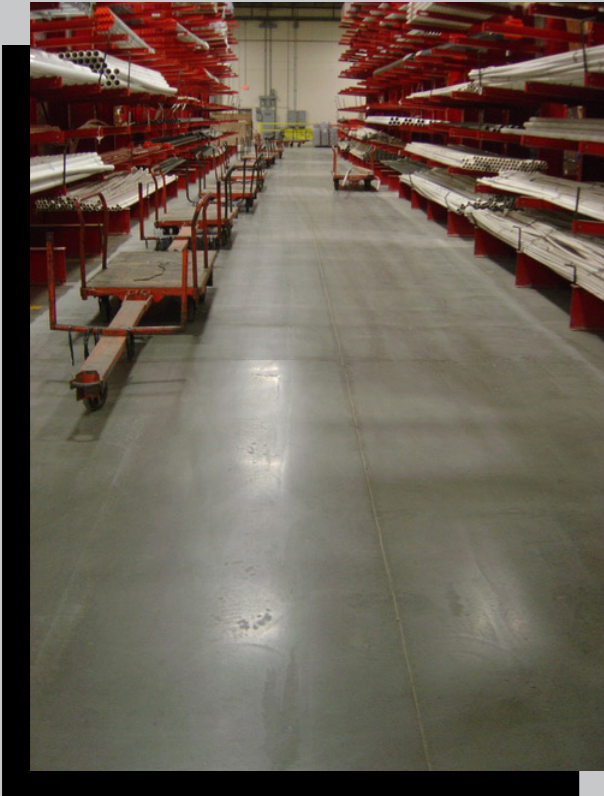
On new floor construction this should be fine, however, there are certain procedures to follow to get the best end result, like wet curing during the first week after the floor has been placed. On older floors it is important to see the texture and condition of the floor before deciding if and how to polish your specific floor. If the floor still has VCT or tile on it you need to see the condition of the floor to set the proper polishing specification.

Assuming the floor is in good shape, you can then decide on what you want or need. This is important, some people want the shiniest floor possible, but have an environment where maintenance becomes to costly or polishing will not stand up to their use, like in a harsh chemical environment.

If you want some of the best products and services, contact ICS today about your project and one of concrete polishing experts will be able to give you the assistance you need. As leading concrete polishing contractors, we'll be able to help you keep the concrete polishing process simple and efficient, as knowledgeable experts in the industry. We have all of the resources necessary to cover every aspect of your project, providing you with the right solution for any application and facility. Regardless of your project's specific needs, we're ready to help you today.

Polished Concrete





Concrete Sealing

THE DIFFERENT TYPES:

- CURE & SEAL
- SILICATES
- SILANE
- ACRYLICS
- EPOXY
- URETHANE



The Importance of Concrete Floor Sealers & Sealants

Concrete sealers are protective coatings applied to concrete surfaces to shield them from environmental elements, stains, and daily wear and tear. They can be either water-based or solvent-based with varying levels of sheen, from matte to high gloss. Apart from aesthetic purposes, sealers prolong the lifespan of concrete by preventing moisture penetration, UV damage, and chemical exposure. Therefore, regularly sealing concrete can maintain its appearance and structural integrity for years to come. Concrete sealers come in hundreds of options and variations; however, some are more popular and more widely used than others.



CTS RapidSet Levelflor

Rapid Set® LEVELFLOR® is an advanced hydraulic cement-based, polymer-modified self-leveling underlayment that can be used both indoors and outdoors. LEVELFLOR rapidly levels, maintains workability for 20 minutes and produces a flat, strong surface with high bond strength. LEVELFLOR is designed for fast track leveling applications and can be covered with finished flooring in 4 to 16 hours at 70°F (21°C), depending on the flooring type. This advanced underlayment can be applied from featheredge to 2" (5.1 cm) thick and up to 5" (12.7 cm) thick when extended with aggregate. Contractors and engineers specify LEVELFLOR for self-leveling floor underlayment applications when a fast, durable and economical solution is required.

Use LEVELFLOR when a high quality, fast-setting, self-leveling underlayment is needed. LEVELFLOR is ideal for all floor projects that need long flow life and working time while achieving high 24-hour strength. Use to level or change the elevation of your substrate prior to installing carpet, tile, hardwood, or resinous flooring. LEVELFLOR is an excellent choice for new floor projects and repair projects.

Functional Interiors:

Repairs

Slab Stabilization

Slab stabilization (also called under-sealing and subsealing) is the pressure insertion of a highly flowable material beneath the slab or stabilized base to restore the support beneath transverse and longitudinal joints that has been eroded away.

All concrete slabs are designed with control joints to allow for the changes that take place as the concrete cures and shrinks. However, differing environmental conditions will cause the top of the slabs to cure quicker and shrink beyond the capacity of the joints causing the slab panel to move upward creating a void or cavity below the slab; this phenomenon is called "curl". As the slab reaches its full cure, the panels between the joints could actually begin to rock above the voids. Once a slab begins to rock, the next steps will include joint filler failures and spalls which could lead to lost revenues in terms of forklift damage, product loses or even forklift accidents.



Cracks

The two main objectives when repairing cracks in concrete are structural bonding and stopping water flow. For a structural bond, epoxy injection can be used. This process can be very expensive since a skilled contractor is needed for proper installation. The epoxy is injected into the concrete under pressure, welding the cracks to form a monolithic structure. This method of repair should not be considered if the crack is still active (moving). For a watertight seal, a urethane sealant can be used. The repair technique does not form a structural bond; however it can be used on cracks that are still active. Cracks should be opened using a concrete saw or hand tool prior to placing the sealant. A minimum opening of 1/4 inch is recommended since small openings are hard to fill. Urethane sealants can be reapplied since they are flexible materials and will adhere to older applications. All of the factors causing cracking must be identified and addressed before repairing the concrete to prevent the reoccurrence of cracks.

CONCRETE PREP

DIAMOND GRINDING



SHOT BLASTING



LINE STRIPING

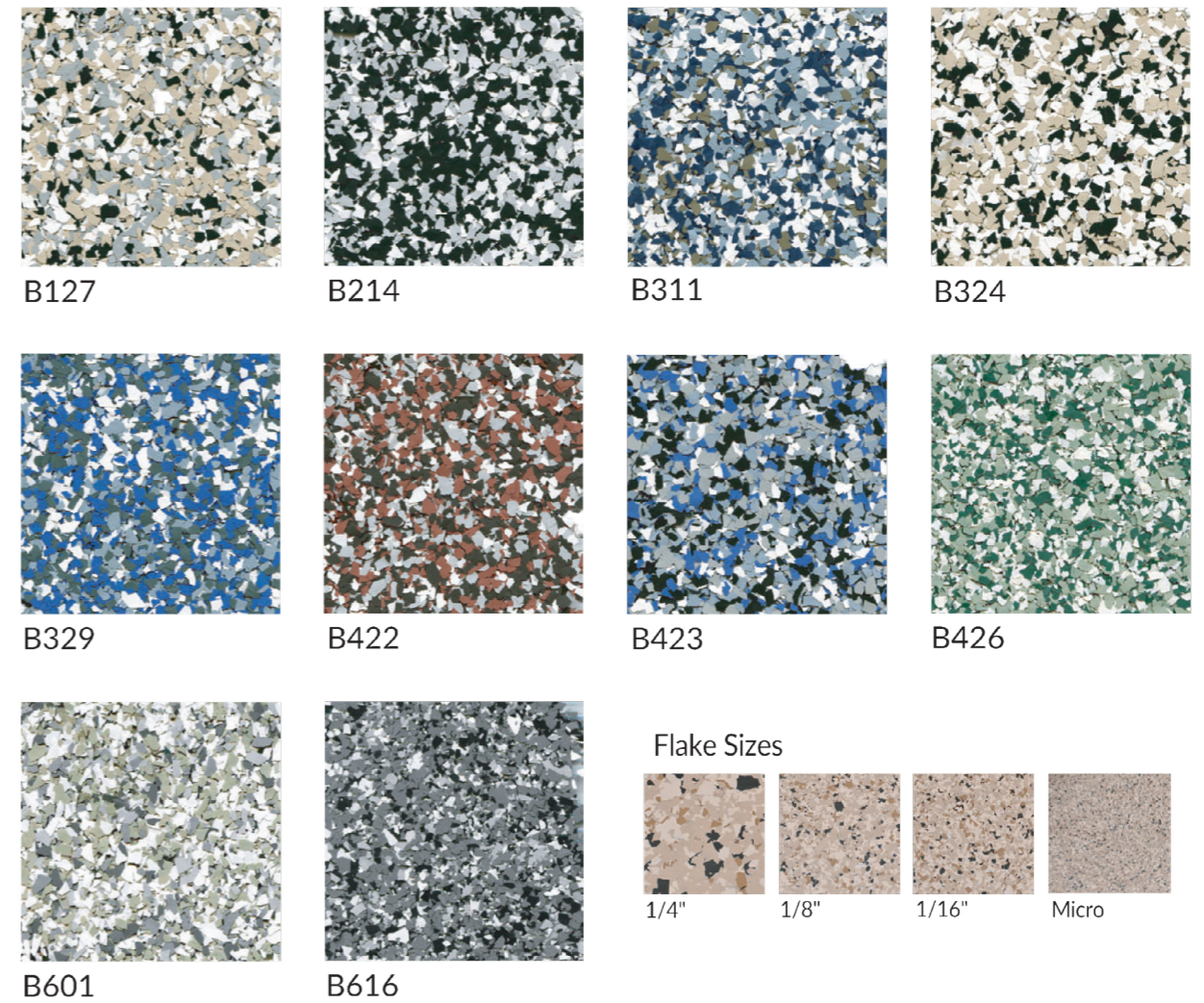
MACROEPOXY 646



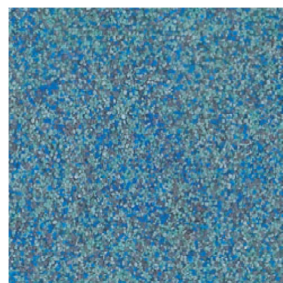
COMMON COLOR GUIDE



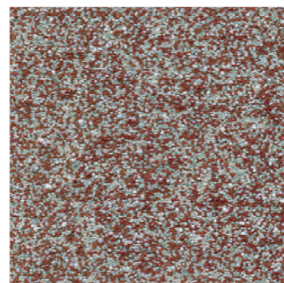
CHROMAFLAKE COLOR GUIDE



QUARTZCAST COLOR GUIDE



Allure



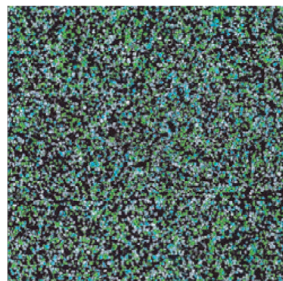
Brick



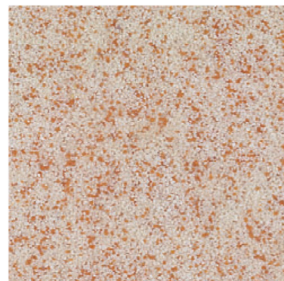
Copper



Cork



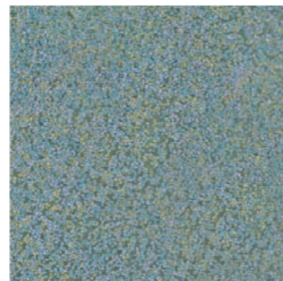
Emerald



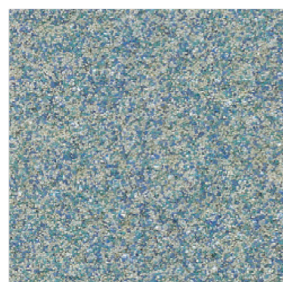
Goldspell



Grey Mist



Greycious

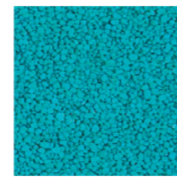


Ocean

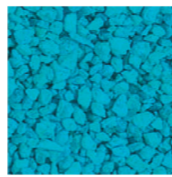


Shell

Quartz Sizes



S-Grade

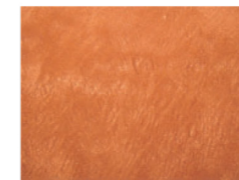


T-Grade

LUMISWIRL COLOR GUIDE



Pearl



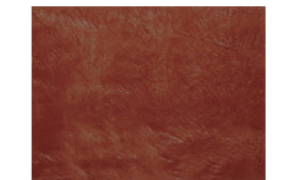
Mango



Guava



Avocado



Americana



Whale



Banana



Cabana



Caribbean



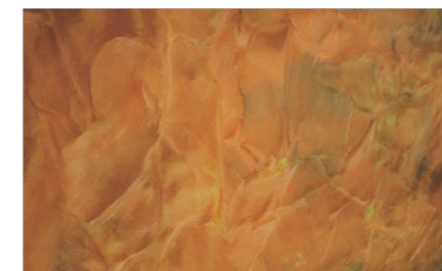
Maui



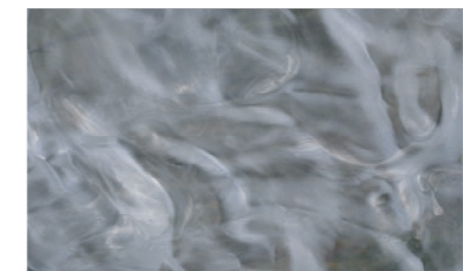
Base Coating Color: Black
LumiSwirl Pigment(s): Maui



Base Coating Color: Black
LumiSwirl Pigment(s): Avocado



Base Coating Color: Black
LumiSwirl Pigment(s): Mango, Cabana
LumiSwirl Accent Pigment(s): Banana



Base Coating Color: White
LumiSwirl Pigment(s): Whale
LumiSwirl Accent Pigment(s): Guava



Inspiration

INDUSTRIAL CONCRETE SERVICES

(207) 856-5000
www.icscoatings.com

THE ART OF CONCRETE DESIGN
